



1ST STOREY SITE PLAN

- | | | |
|----------------------------|-----------------------|--------------------------|
| 1. Drop-Off | 10. Aqua Gym | A. Guardhouse |
| 2. Main Lobby | 11. Children's Pool | B. Electrical Substation |
| 3. Yoga Lawn | 12. 50M Lap Pool | C. Bin Centre |
| 4. The Gym | 13. Poolside Pavilion | D. MCST Office |
| 5. Fitness Corner | 14. Dining Pavilion | E. MDF Room |
| 6. Adventure Playground | 15. Lounge Pavilion | F. Outdoor Genset |
| 7. Outdoor Shower | 16. Lift Lobby 01 | |
| 8. Cocoons By The Poolside | 17. Lift Lobby 02 | |
| 9. Pool Lounge | | |

21ST STOREY PLAN

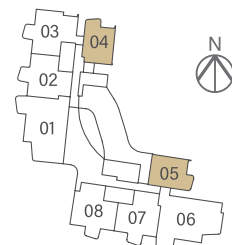
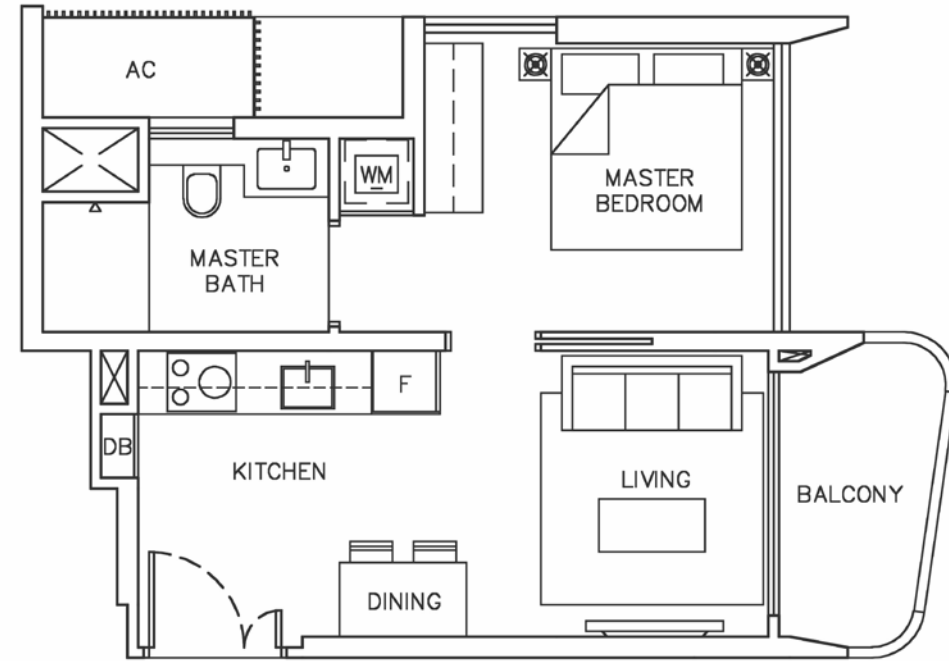
- | |
|--------------------|
| 1. Sky Pool |
| 2. Sky Dining |
| 3. Sky Lounge |
| 4. Sky Deck |
| 5. Lift Lobby 01 |
| 6. Lift Lobby 02 |
| A. Water Tank Area |



1-BEDROOM

TYPE A1
42 SQM / 452 SQ FT

#03-04 to #19-04 (Mirror)
#03-05 to #20-05

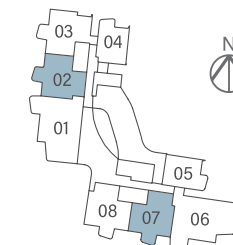
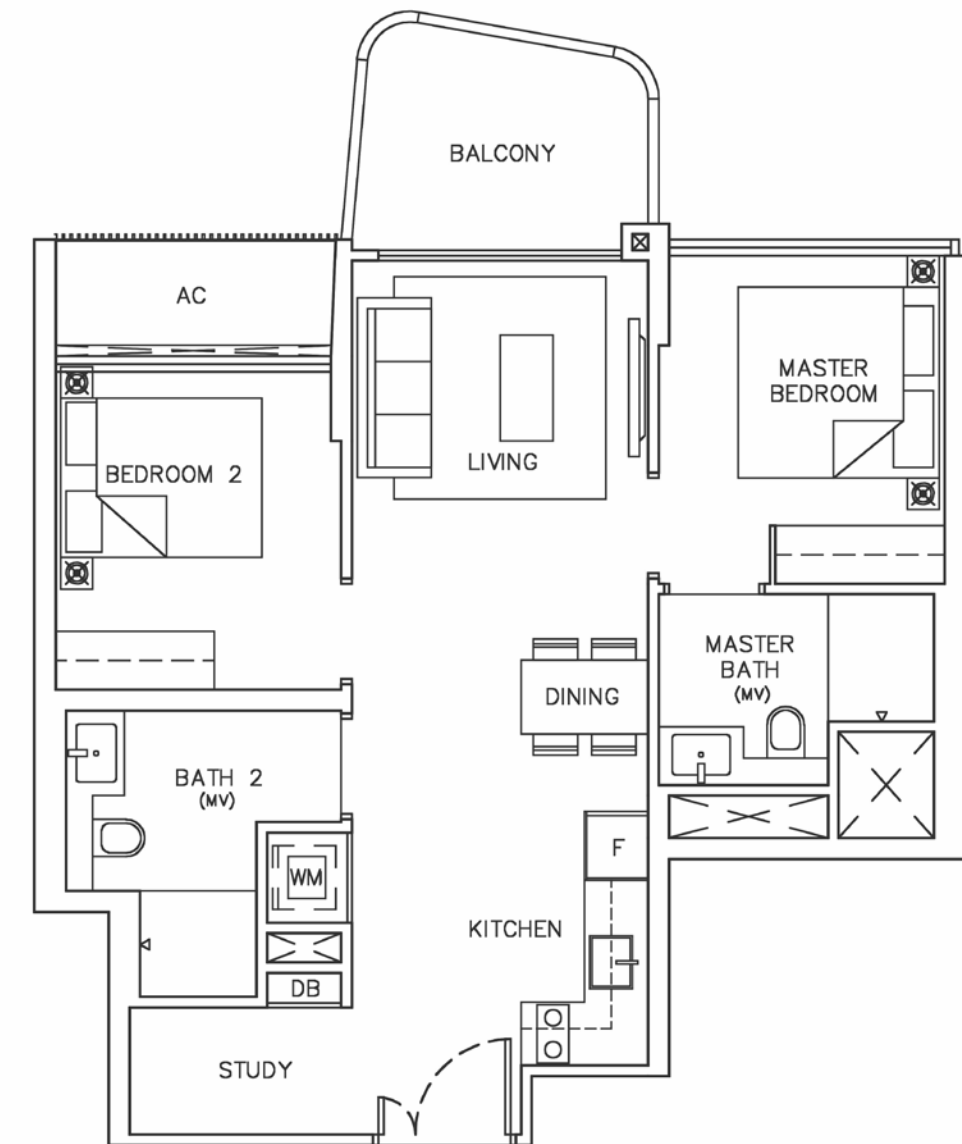


Orientations and facings will differ depending on the unit you are purchasing. Please refer to the key plan. Plans are not drawn to scale and subject to change as may be required or approved by the relevant authorities. All areas are estimates and are subject to final survey.

2-BEDROOM

TYPE B1
66 SQM / 710 SQ FT

#03-02 to #20-02
#03-07 to #20-07

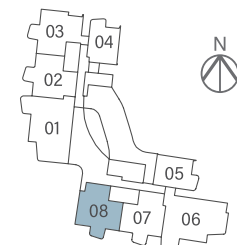
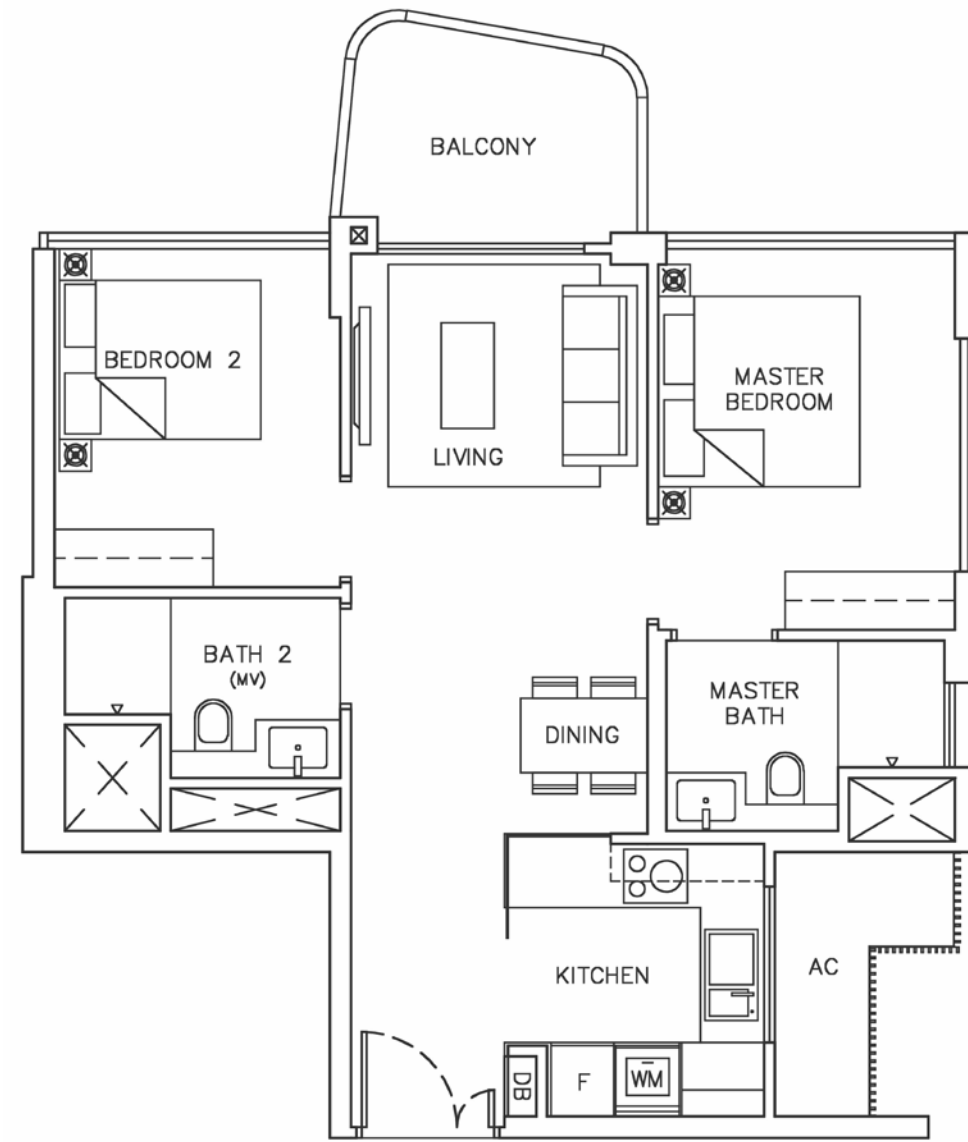


Orientations and facings will differ depending on the unit you are purchasing. Please refer to the key plan. Plans are not drawn to scale and subject to change as may be required or approved by the relevant authorities. All areas are estimates and are subject to final survey.

2-BEDROOM

TYPE B2
67 SQM / 721 SQ FT

#03-08 to #20-08

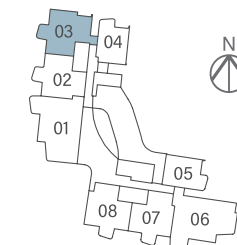
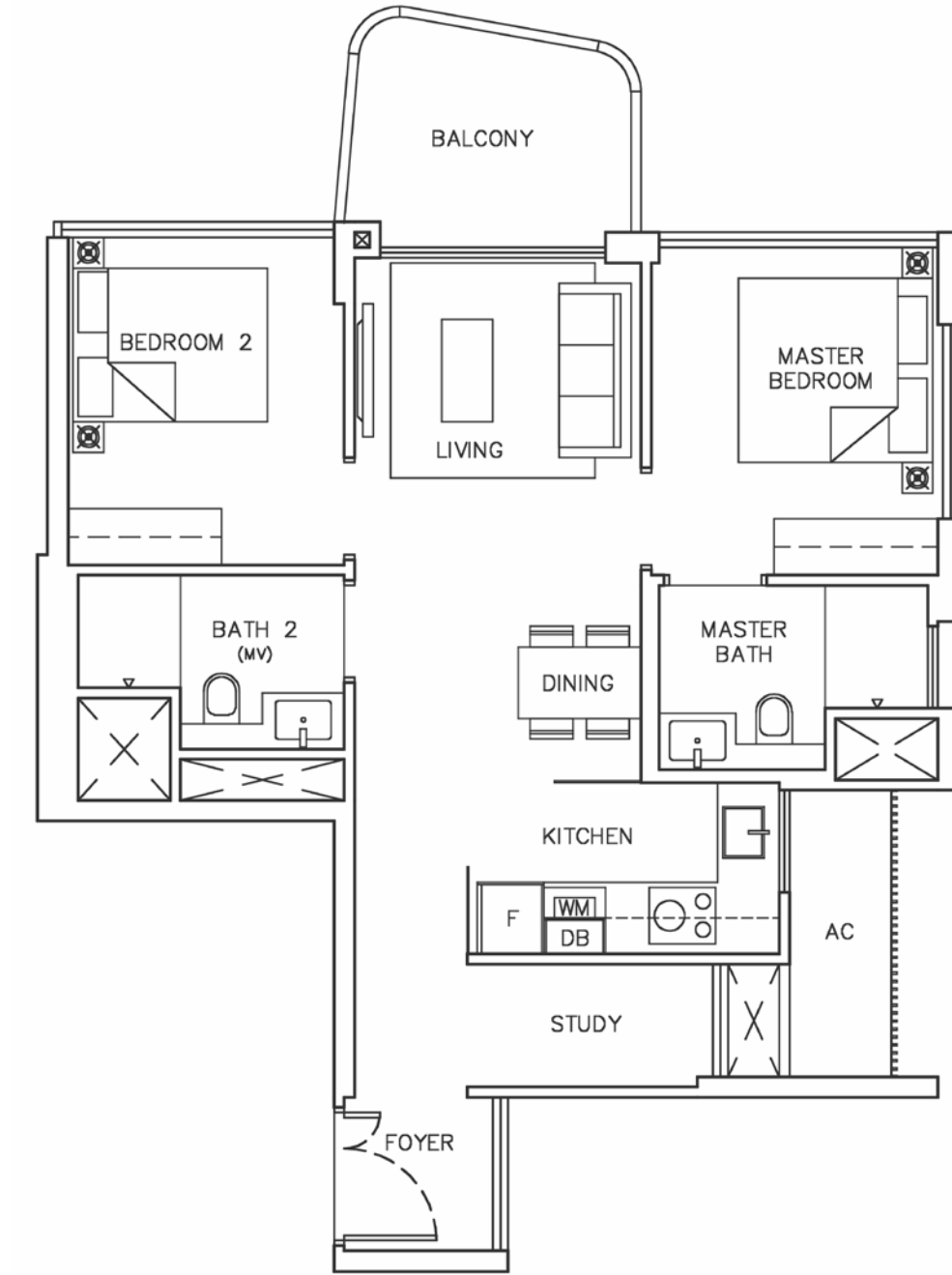


Orientations and facings will differ depending on the unit you are purchasing. Please refer to the key plan. Plans are not drawn to scale and subject to change as may be required or approved by the relevant authorities. All areas are estimates and are subject to final survey.

2-BEDROOM

TYPE B3
69 SQM / 743 SQ FT

#03-03 to #20-03

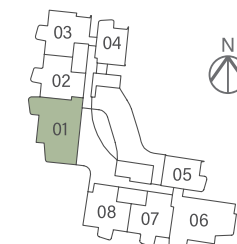
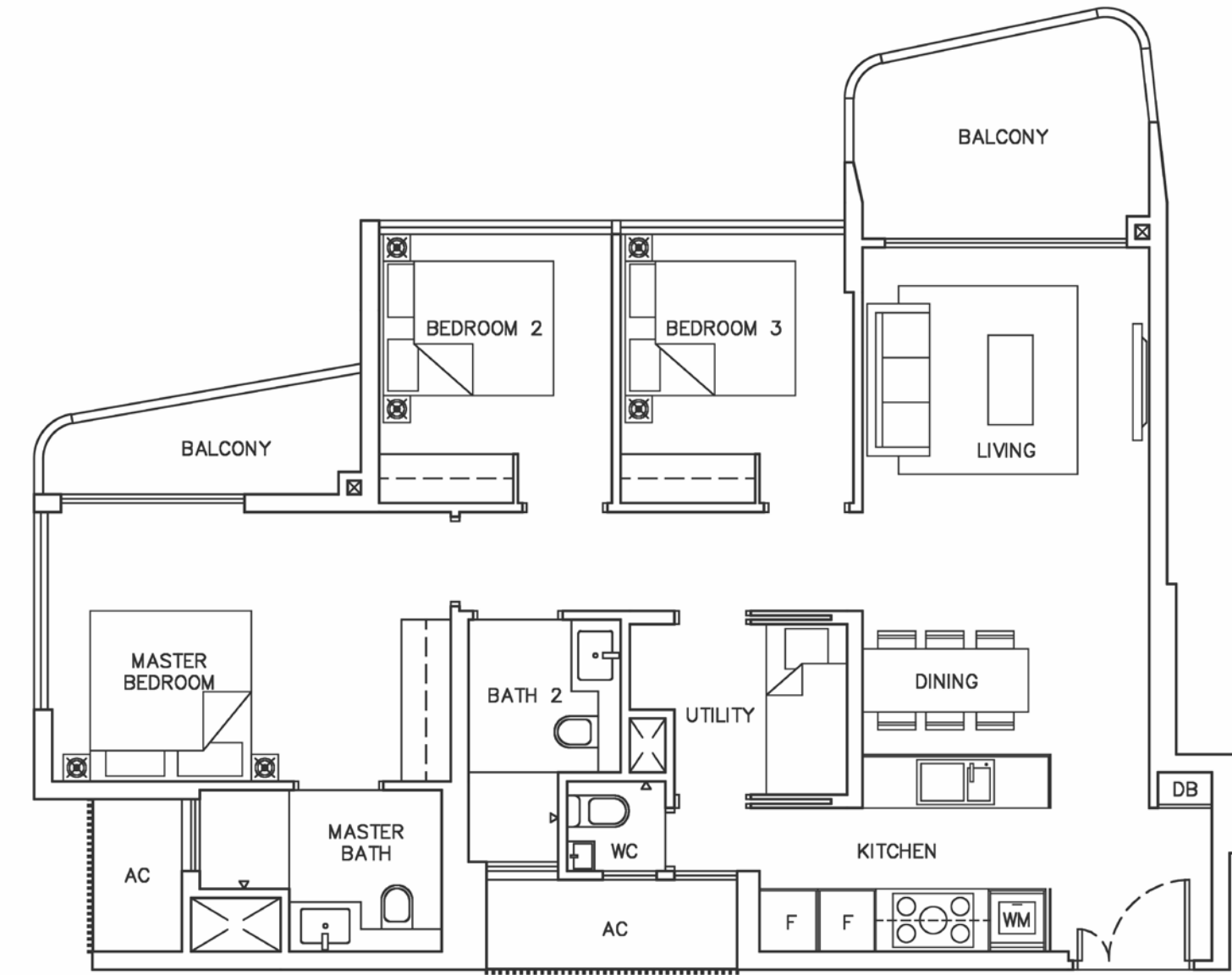


Orientations and facings will differ depending on the unit you are purchasing. Please refer to the key plan. Plans are not drawn to scale and subject to change as may be required or approved by the relevant authorities. All areas are estimates and are subject to final survey.

3-BEDROOM

TYPE C1
103 SQM / 1,109 SQ FT

#03-01 to #20-01

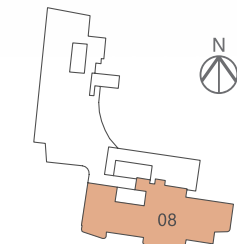
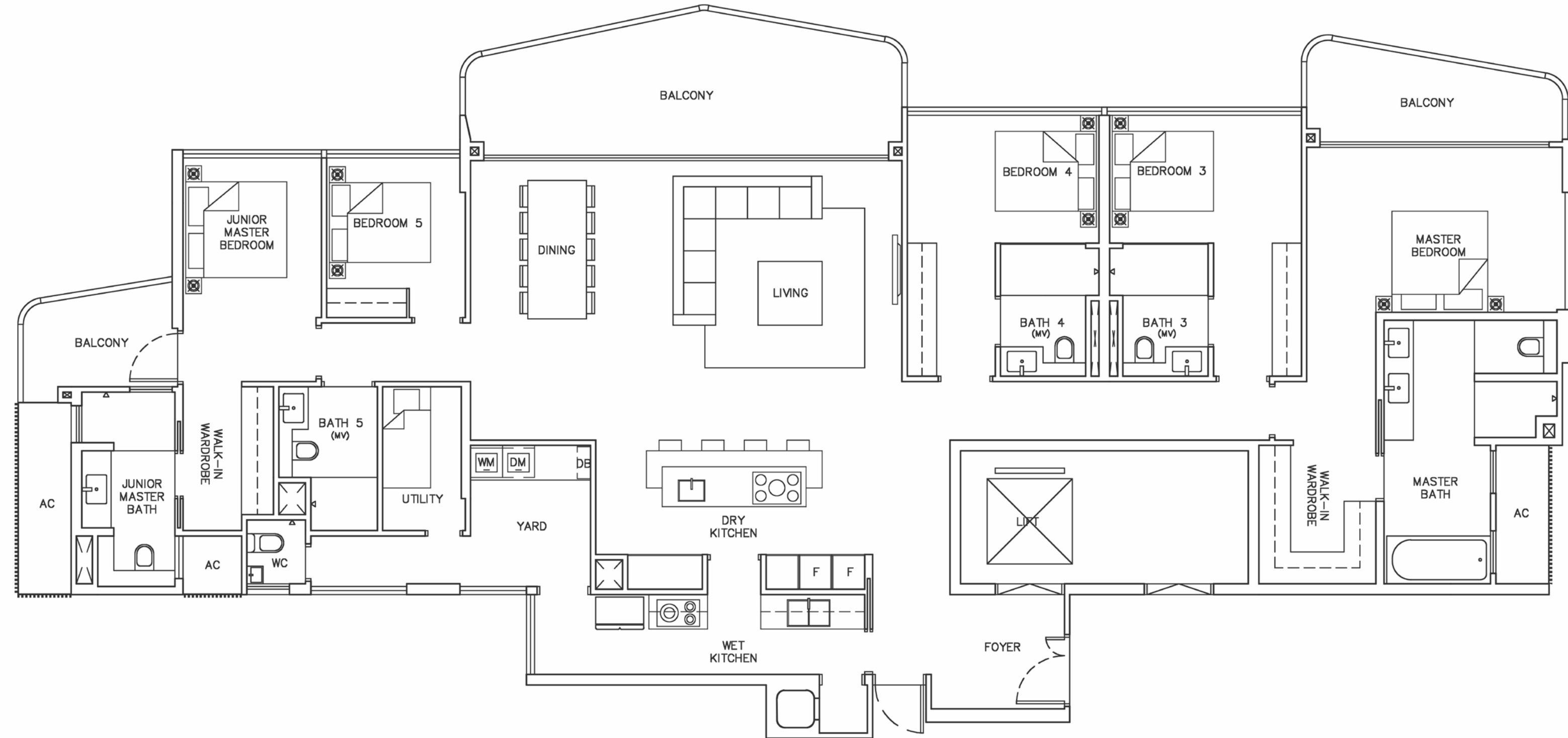


Orientations and facings will differ depending on the unit you are purchasing. Please refer to the key plan. Plans are not drawn to scale and subject to change as may be required or approved by the relevant authorities. All areas are estimates and are subject to final survey.

5-BEDROOM PENTHOUSE

TYPE PH1
268 SQM / 2,885 SQ FT

#21-08



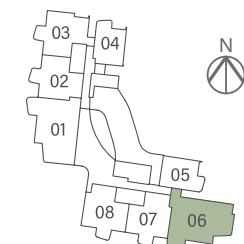
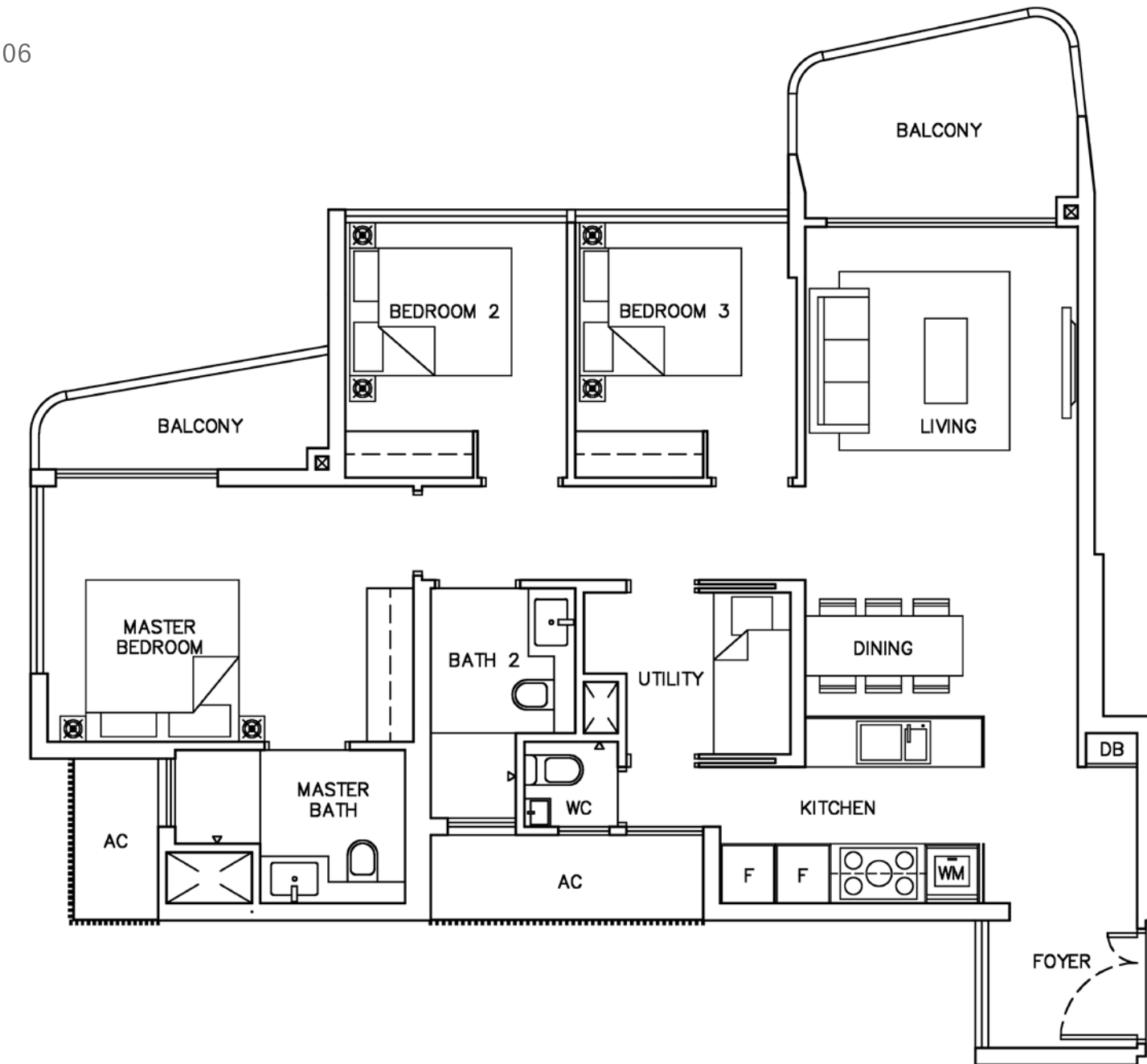
Orientations and facings will differ depending on the unit you are purchasing. Please refer to the key plan. Plans are not drawn to scale and subject to change as may be required or approved by the relevant authorities. All areas are estimates and are subject to final survey.

3-BEDROOM

TYPE C2

105 SQM / 1,130 SQ FT

#03-06 to #20-06



Orientations and facings will differ depending on the unit you are purchasing. Please refer to the key plan. Plans are not drawn to scale and subject to change as may be required or approved by the relevant authorities. All areas are estimates and are subject to final survey.

ANOTHER PRESTIGIOUS PROJECT BY...